

Bellaterra, 19 of July of 2011

We inform you that APPLUS – LGAI have tested one fan according to UNE EN 12101-3:2002 and UNE EN 12101-3:2002/AC:2006. This fan has been tested successfully, obtaining F400 120 min classification (file number 11/2356-1658).

- File no. 11/2356-1658 smoke extract fan CTVT/4-801 INS 22kW by Soler i Palau mounted in the furnace and acoupled with the flexible coupling JAE-1250 using the following flexible connector bands made of fiberglass: one coated with silicone AFSCONNECTOR SILICONE and another with PU on both sides AFSCONNECTOR PU, providing dampening against vibration and absorbing lateral movements. Both flexible duct connector are from AFS BORU SANAYI.

Applus only verified that after fire test the flexible connector does not suffer visible alterations (it remains without any cracks).

This document contains 4 pages, 3 of which are technical specifications provided by the sponsor.



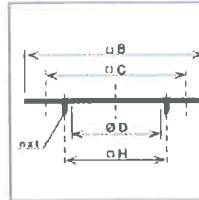
Xavier Vizcaya
Fire Resistance Technician
LGAI Technological Center, S.A.

This document is issued only with informative purpose.
Test results refers only and exclusively at tested samplers and moments and conditions indicated on each test reports.
All results here stated are provisional and subject to change in the final test report.
The only valid document is the complete test report issued by Applus-LGAI.

18. ANNEX P (Adapter Plate)

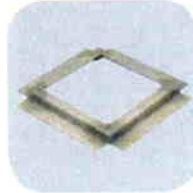


Placa de adaptación JPA
 - Utilizado para el montaje de los accesorios (JCA, JBR, JAE)
 - Permite desmontar el extractor de su soporte sin que sea necesario desmontar el conducto conectado al extractor.

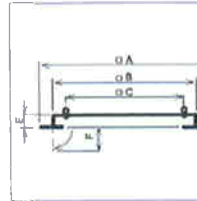


Modelo JPA	- B	- C	Ø D	nxt	Ø H
560	544	450	358	8xM8	395
630	614	535	403	8xM10	450
710	694	590	503	12xM10	560
905	884	750	633	12xM10	690
1100	1079	840	713	16xM10	770
1250	1230	950	1000	8xM12	1070

19. ANNEX Q (Fan Support)



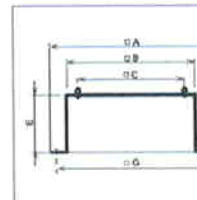
Marco soporte JMs
 - Para el montaje de los tejados en los zócalos
 - Se suministra la tornillería y una junta de goma para la estanqueidad.



Modelo JMs	- A	- B	- C	E	F
560	725	545	450	50	70
630	795	615	535	50	70
710	875	695	590	50	70
905	1065	885	750	60	70
1100	1260	1080	840	60	70
1250	1410	1230	950	60	70



Base soporte JBs
 - Para el montaje de los ventiladores en tejados fijos sin zócalo
 - Montar en tejados horizontales
 - Aislamiento interno para evitar la condensación
 - Se suministra la tornillería y una junta de goma para la estanqueidad.

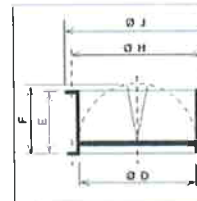


Modelo JBs	- A	- B	- C	E	- G
560	725	544	450	300	635
630	795	614	535	300	705
710	875	694	590	300	785
905	1065	884	750	400	975
1100	1260	1079	840	400	1170
1250	1410	1230	950	300	1320

20. ANNEX R (Backdraft Shutter)



Compuerta antirretorno JCA
 - Evita la circulación de aire y las fugas de calefacción cuando el extractor está parado.
 - Se monta a la aspiración del extractor con la placa JPA.

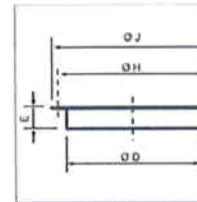


Modelo JCA	Ø D	E	F	Ø H	Ø J
560-N	358	210	227	395	415
630-N	403	240	250	450	474
710-N	503	285	300	560	581
905-N	633	345	365	690	714
1100-N	713	390	410	770	806
1250	1004	560	560	1070	1110

21. ANNEX S (Flange)



Brida JBR
 - A utilizar cuando se requiere conectar un conducto circular directamente al extractor.
 - Se monta a la aspiración del extractor con la placa JPA o se fija directamente a la base del extractor (remaches o tornillos).

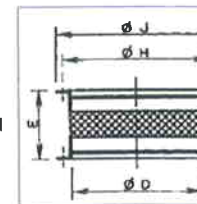


Modelo JBR	Ø D	E	Ø H	Ø J
560	358	55	395	415
630	403	63	450	474
710	503	69	560	581
905	633	69	690	714
1100	713	69	770	797
1250	1004	105	1070	1110

22. ANNEX T (Flexible Coupling)



Acoplamiento elástico JAE
 - Limita la transmisión de vibraciones cuando el conducto está conectado directamente al extractor.
 - Se monta a la aspiración del extractor con la placa JPA.



Modelo JAE	Ø D	E	Ø H	Ø J
560	358	254	395	415
630	403	254	450	474
710	503	254	560	581
905	633	254	690	714
1100	713	254	770	797
1250	1004	254	1070	1110



AFSCONNECTOR

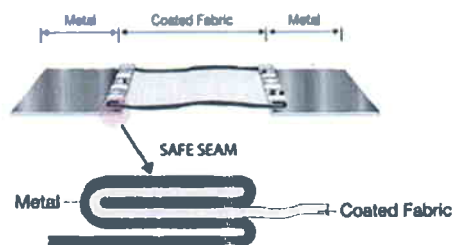
FLEXIBLE DUCT CONNECTORS Vibration Isolation Connectors

APPLICATION

- AFSCONNECTOR is specifically designed for heating, cooling, ventilation and air conditioning systems.
- AFSCONNECTORS are used to connect mechanical equipments and rigid air ducts or two rigid air ducts, providing dampening against vibration and absorbing lateral movements.

LOCKING SYSTEM

AFSCONNECTORS are produced using a special **SAFE SEAM** technique from 'galvanized steel plate + coated fabric + galvanized steel plate'. The **SAFE SEAM** clamp system ensures that the coated fabric and the galvanized steel plate are inseparable.



COATING TYPE

AFSCONNECTORS can be produced of PVC, SILICONE, PU, NEOPRENE, or CANVAS as required for application.

OTHER GENERAL PROPERTIES

- AFSCONNECTORS are leak proof (airtight & water proof)
- They are suitable for rectangular, oval and circular applications, and easy to install.





TECHNICAL PROPERTIES



	PVC	PU	NEOPRENE	SILICONE	CANVAS
Base Fabric	Polyester	Fiberglass	Fiberglass	Fiberglass	Cotton
Coating	PVC (Both Sides)	PU (Both Sides)	Neoprene (Both Sides)	Silicone (Both Sides)	Chemical Coating
Color	Grey & Black	Grey & Black	Black	Grey	Green
Temperature Range	-30 °C / +80 °C	-30 °C / +200 °C	-30 °C / +180 °C	-50 °C / +260 °C	+80 °C
Fire Resistance	Fire Retardant	Fabric non-combustible Coating: fire retardant	Fabric non-combustible Coating: fire retardant	Fabric non-combustible Coating: flame proof	Fire Retardant
Specifications	Suitable for general applications Economical choice	High resistance to abrasion Suitable for high temperature applications for a certain period time (400 °C / 2 h)	Suitable for high velocity applications High resistance to alkalies and gasoline	Suitable for high temperature applications High resistance to weathering and chemicals	Versatile and cost effective Resistant to humidity and mildew
Fire Certificate	PVC	PU	NEOPRENE	SILICONE	CANVAS
France		MG			
USA	UL 723				
USA	NSFM 701 (formerly UL 214)				
Certificate					
Russia	GOST-R	GOST-R	GOST-R	GOST-R	GOST-R
Construction	Galvanized steel plate + Coated fabric + Galvanized steel plate				
Galvanized Steel Plate Thickness	28 gauge				
Packing	Single Cardboard Box				
Standard dimensions	Metal + Coated Fabric + Metal	Length	Cardboard Box		
	35 mm + 60 mm + 35 mm	25 m	430 mm x 180 mm x 430 mm		
	35 mm + 60 mm + 35 mm	50 m	500 mm x 180 mm x 500 mm		
	45 mm + 60 mm + 45 mm	25 m	430 mm x 180 mm x 430 mm		
	45 mm + 60 mm + 45 mm	50 m	500 mm x 180 mm x 500 mm		
	45 mm + 75 mm + 45 mm	25 m	430 mm x 180 mm x 430 mm		
	45 mm + 75 mm + 45 mm	50 m	500 mm x 180 mm x 500 mm		
	45 mm + 100 mm + 45 mm	25 m	430 mm x 180 mm x 430 mm		
	45 mm + 100 mm + 45 mm	50 m	500 mm x 180 mm x 500 mm		
	45 mm + 150 mm + 45 mm	25 m	430 mm x 250 mm x 430 mm		
	45 mm + 150 mm + 45 mm	50 m	500 mm x 250 mm x 500 mm		
	50 mm + 60 mm + 50 mm	25 m	430 mm x 180 mm x 430 mm		
	50 mm + 60 mm + 50 mm	50 m	500 mm x 180 mm x 500 mm		
	70 mm + 100 mm + 70 mm	25 m	430 mm x 250 mm x 430 mm		
70 mm + 100 mm + 70 mm	50 m	500 mm x 250 mm x 500 mm			
70 mm + 150 mm + 70 mm	25 m	430 mm x 300 mm x 430 mm			
70 mm + 200 mm + 70 mm	25 m	430 mm x 300 mm x 430 mm			
On Request	Stainless steel or aluminium construction				

•••••